



MAGNETIC GATE LOCKS ACCESS CONTROL



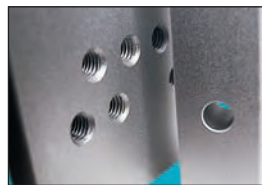
holding force
of 600 to 1200 lbs.



electrical
enclosures for easy installation
(1200 lbs. only)



no moving parts
to wear out or break which
assures a locking device with an
extremely long life



predrilled
brackets included for easy
installation (1200 lbs. only)

- Superior reliability, strength, and safety
- Fast and easy installation
- Predrilled/tapped electrical enclosure conduit holes
- Mounting brackets are predrilled/tapped for easy welding to the gate and assembly to the mag lock (brackets included), making for easy installation, repairs, and replacement
- No residual magnetism
- Fail-safe operation assures that fire exit paths are unlocked during power outages
- MOV surge protection protects locks from transient voltage spikes
- No moving parts to wear out or break assures a long life cycle
- Built in relay on selected models for gate lock status indication

FEATURES

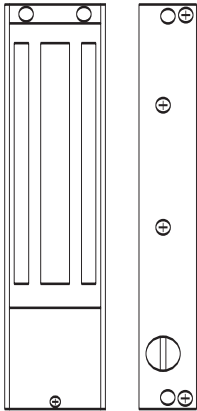
ACCESS CONTROL SOLUTIONS



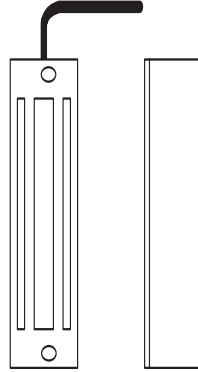


MAGNETIC LOCKS

The DKGL (DoorKing Gate Lock) series magnetic locks are designed for outdoor gate applications. The 1200 Lb. lock provides an electrical enclosure with predrilled and tapped conduit holes on the top, bottom, side, and back providing easy wiring and installation. The 600 Lb. lock includes a built-in cable assembly for all wiring connections.



DKGL-S12
1.375" H x 10.675" W x 1.25" D
34.9mm x 271.1mm x 31.7mm



DKGL-S6
1.75" H x 8" W x 1.25" D
44.5mm x 203.2mm x 31.7mm



General Specs

Models **Lbs holding force**

GATE LOCK KITS

1216-080 **1200**
Kit includes: DKGL-S12-1 mag lock,
BO1-GL12 lock mounting bracket
BO2-GL12 armature mounting bracket

1216-081 **1200**
Kit includes: DKGL-S12-1L mag lock,
built-in lock status relay
BO1-GL12 lock mounting bracket
BO2-GL12 armature mounting bracket

GATE LOCKS ONLY
(mounting brackets not included)

DKGL-S12-1 **1200**
Predrilled and tapped conduit holes
Top, bottom, or face mounting
Optional built-in signal relay
(DKGL-S12-1L includes built-in
signal relay)

DKGL-S6-1 **600**
Built in signal relay
Built in cable assembly
Face mount only

Advanced Features

Magnetic locks have no moving parts to wear out or break which assures a locking device with an extremely long life cycle

Electromagnetic locks are vandal resistant making them ideal for practically any application

When wired with fire alarms, magnetic locks immediately release the door that they are securing, assuring that fire exit paths are open

Quick release "pop" button assures instant release whenpower is removed

Operate on 12 or 24-volt DC power, field selectable

Designed for outdoor gate use

Mounting brackets available for 1200 Lb models:
Lock mounting bracket, fully weldable .25" steel plate, predrilled and tapped.
Armature mounting bracket, fully weldable .25" steel plate, predrilled and tapped.

Electrical

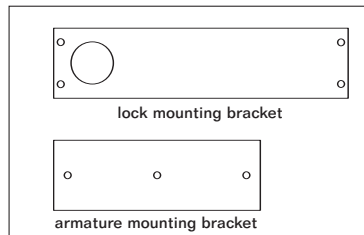
12 or 24 VDC field selectable
500 ma@12 VDC, 250 ma@24 VDC
Lock status relay:
5A@30 VDC/AC maximum

Approximate Shipping Weight

dkgl-S12-1 & dkgL-S12-1L: 11 lbs. (4.9kg)
BO1-gl12 & BO2-gl12: 2 lbs. (.9kg)
1216-080 & 081: 15 lbs. (6.8kg)

Warranty

5 year limited factory warranty



Distributed by:

DOOR KING®, INC.

© 2006 All Rights Reserved. Product specifications may change without notice. Rev. 6/06

MEMBER:

