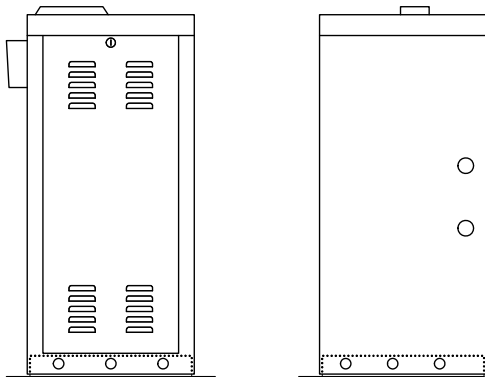


## MODEL 9230 3-HP Variable Speed Slide Gate Operator

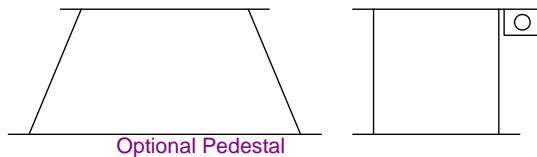
*For gates up to 100-feet long, 5000 Lb. maximum gate weight*

The model 9230 variable speed slide gate operator is designed to operate vehicular sliding gates used in limited (Class III) or restricted (Class IV) access industrial applications only. The operator has a full feature circuit board, adjustable speed control and includes chain brackets, hardware and 20-feet of #60 chain. When used to operate gates weighing over 1500 Lb., the 9200-135 pedestal is required.



### Standard Features

- 3 HP, for gates up to 100-feet, 5000 Lb
- Variable speed: ½ - 2ft / sec.
- Slow start / slow stop
- Direct driven manual limits
- Programming switches allow you to set desired mode of operation
- Fail-secure design
- Anti-tailgating feature
- Gate Tracker reporting output provides operator data to access control system\* (\*DKS systems with card access only)
- Auto-close timer
- Plug-in loop detectors
- 2 convenience outlets
- 5-year limited warranty
- 10°F to 140°F (-12°C to 62°C)



### Options

- Heavy-duty pedestal style mounting stand (recommended for gates over 30-feet to allow use of chain support rail). **Must be used with gates weighing over 1500 Lb.**
- Gate operator control stations
- Heater kit (recommended when temperature routinely falls below 32°F (0°C)).
- Plug-in loop detectors
- Slide gate accessories
- **Secondary entrapment prevention devices are required with this gate operator.**

Dimensions	Shipping Weight	Class	Power
9230 16"W x 34"H x 16"D	312-340 Lbs.	Class: III and IV	208 / 230 VAC, 60 Hz 3 <sup>Ø</sup> 3 HP: 12.4 A
Pedestal 31.25"W x 12"H x 18"D	90 Lbs.		

DOORKING VEHICULAR GATE OPERATORS

Rev 6/08

---

<b>9230 Slide Gate Operators</b>		
<b>P/N</b>	<b>Description</b>	
9230-080	3 HP, 208 VAC 3 <sup>Ø</sup>	
9230-081	3 HP, 230 VAC 3 <sup>Ø</sup>	

<b>Accessories</b>		
<b>P/N</b>	<b>Description</b>	
9409-010	DoorKing plug-in 2-channel detector. Use with DKS operators only.	
9410-010	DoorKing plug-in single channel detector. Use with DKS operators only.	
1601-154	<b>Heater Kit</b> Heater kit for operators installed in cold weather environments. Built-in fan and thermostat.	
2600-448	20-feet #60 chain and two master links.	
9200-135	Heavy-duty pedestal mount	