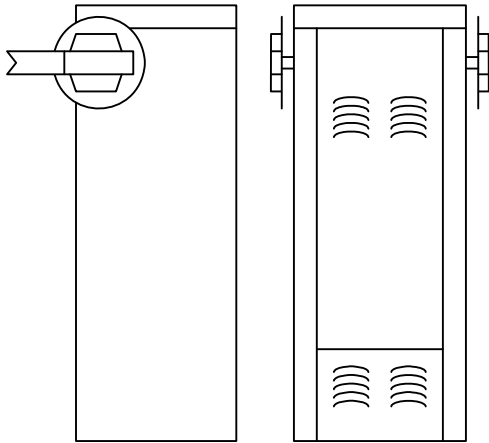


MODEL 1602 Barrier Gate Operator

Maximum arm length 20-feet

The Model 1602 is designed for low usage vehicle control applications in traffic lanes up to 20-feet wide. The 3-piece wishbone style arm will rotate to the full up position in approximately 5.5 seconds.



Standard Features

- 1 - HP continuous duty motor
- 3-piece 1 x 4 kiln dried wood arm up to 20-feet in length (includes counter-balance weights)
- 60:1 gear reducer rotates full 360°
- Left or right hand mount
- Maintenance free magnetic limits
- Plug-in loop detectors
- 2 convenience outlets
- Up input memory buffer
- Down memory option
- Multiple UP commands
- Built-in timer
- Auto-sequencing inputs for easy interface with slide or swing gate operators
- Gate Tracker reporting output provides operator data to access control system*
(*DKS systems with card access only)
- 5-year limited warranty

Options

- DC Powered convenience open
- 3-piece 20-foot wood arm
- Fan Kit – recommended in hot, humid environments
- Heater Kit – recommended when temperatures routinely fall below 10°F (-12°C).
- Plug-in loop detectors
- Gate operator control stations
- **Secondary entrapment prevention devices should be used with this barrier gate operator. Refer to Section 3, Pg 9-11 for selection of devices.**

Dimensions	Shipping Weight	Class	Power
1602 39.75"H x 15.25"W x 15.75"D	240-275 Lbs.	Class: III, IV	115 VAC, 60 Hz 7.0 A
			230 VAC, 60 Hz 3.5 A
			460 VAC, 60 Hz 1.8 A

DOORKING PARKING CONTROL PRODUCTS

Rev 6/08)

STEP 1 – Select Operator(s)		
P/N	Description	
1602-080	Barrier Gate Operator, 1 HP, 115 VAC	
1602-082	Barrier Gate Operator, 1 HP, 230 VAC (Note 1)	
1602-084	Barrier Gate Operator, 1 HP, 460 VAC (Note 1)	
1602-081	Barrier Gate Operator w / DC convenience open, 1 HP, 115 VAC	
1602-083	Barrier Gate Operator w / DC convenience open, 1 HP, 230 VAC (Note 1)	
1602-085	Barrier Gate Operator w / DC convenience open, 1 HP, 460 VAC (Note 1)	

STEP 2 – Select Arm		
P/N	Description	
1602-040	3-piece, 20 foot wood arm assembly	
1602-150	3-piece, 28 foot aluminum arm assembly	

Accessories		
P/N	Description	
9409-010	DoorKing plug-in 2-channel detector. Use with DKS operators only.	
9410-010	DoorKing plug-in single channel detector. Use with DKS operators only.	
1601-092	Heater kit	
1601-093	Fan kit	

Notes:

(1) These operators use a step-down transformer to achieve 115 VAC operating voltage.