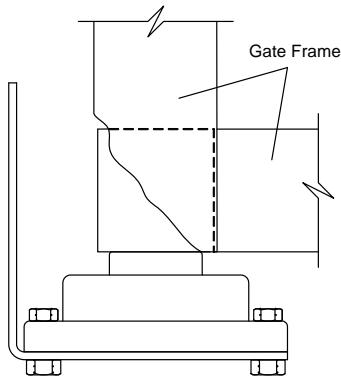


Rev 6/05

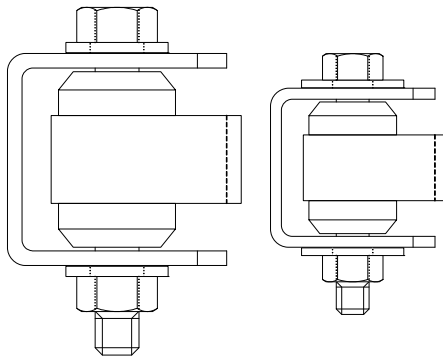
Swing Gate Hinges

The DKS Flange Bearing Hinge is designed for heavy wrought iron gates with 2-inch square framing. This heavy-duty hinge is designed for high traffic applications and each pair can support up to a 3000 Lb. gate. For un-level swing gates, the torsion rod assembly provides a method to counter-balance the gate to prevent gate runaway and relieves pressure on the gate operator. By adding additional torsion rods (6 maximum), heavier gates can be accommodated.



Flange Bearing Hinge Assembly

- Heavy-duty flange bearing hinge
- Weight capacity per pair is 3000 Lbs
- Zert grease fitting
- Includes mounting bracket and hardware
- Two required per gate (top, bottom)
- Designed for use with 2" gate frame
- Smooth and quiet operation



Sealed Bearing Hinge Assembly

- Heavy-duty hinge (1200-039) weight capacity is 3000 Lbs
- Standard hinge (1200-019) weight capacity is 2000 Lbs
- Includes mounting bracket and hardware
- Two required per gate (top, bottom)
- Designed for use with round or square gate frames
- Smooth and quiet operation

Swing Gate Accessories		
P/N	Description	
1200-009	Flange Bearing Hinge assembly.	
1200-010	Replacement bearing for gate hinge assembly.	
1200-019	Sealed Bearing Hinge assembly – standard hinge 2000 Lb.	
1200-039	Sealed Bearing Hinge assembly – heavy duty hinge 3000 lb.	